

21st Century Curriculum for Deeper Learning

PRIMARY 3 & 4

**23rd February 2023
0800h – 0830h**



PROGRAMME

1 Welcome & Introduction

2 Safety and Security Updates

3 Student Development Experiences

4 21st CC Curriculum for Deeper Learning

5 Question and Answer





Every Fuhua Gem – Learner, Leader & Innovator
Creating Opportunities • Leading Learning • Building Communities

Safety and Security Updates

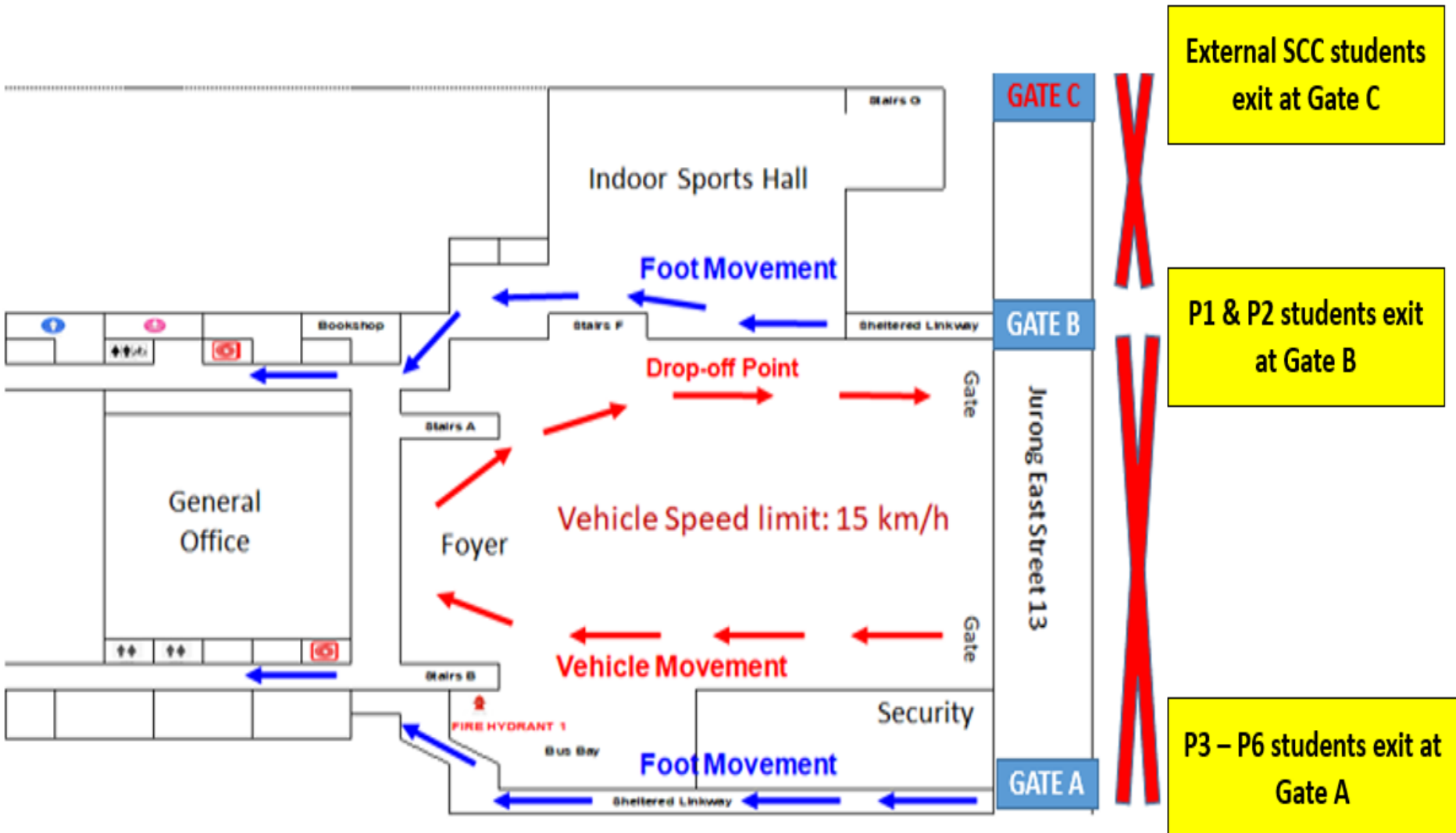


UPDATED DISMISSAL PROCEDURES

Current Situation	Changes with effect from Mon 27 Feb 2023
P1 & P2 parents enter via Gate C to pick up children at Basketball Court P1 & P2 dismissed from Basketball Court with parents and exit via Gate B	P1 & P2 parents will not enter school P1 & P2 dismissed directly from classroom to exit from Gate B
P3 & P5 dismissed at Gate B	P3 – P6 dismissed at Gate A
P4 & P6 dismissed at Gate A	
Siblings wait at Playground and exit via Gate B	Siblings wait at Playground and exit via Gate B (no change)
External SCC staff enter school via Gate B to pick students and exit with students from Gate B	External SCC staff to enter via Gate C and exit with students via Gate C

UPDATED DISMISSAL PROCEDURES

w.e.f. MONDAY 27 FEBRUARY 2023



Student Development Experiences

What is the new SDE initiated at Fuhua?

- iLOVE which stands for I Look out for Opportunities for my Valuable Experiences
- NOT the LOVE in Frank Sinatra's song ya.

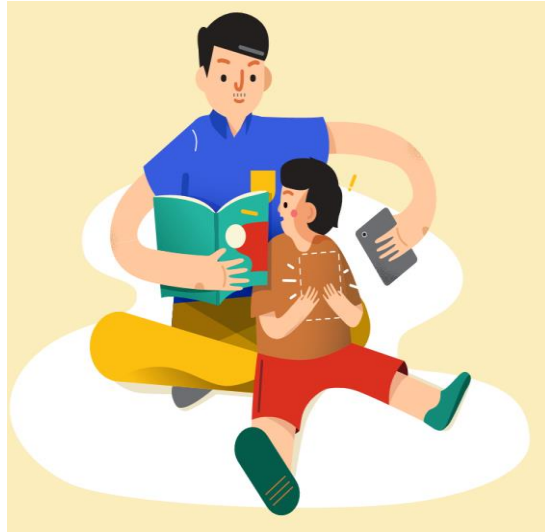
iLOVE programme will commence at the end of this term which is very soon, taking place 3 days a week

- What are the days that we will have iLOVE activities?
- Tuesday, Wednesday & Friday

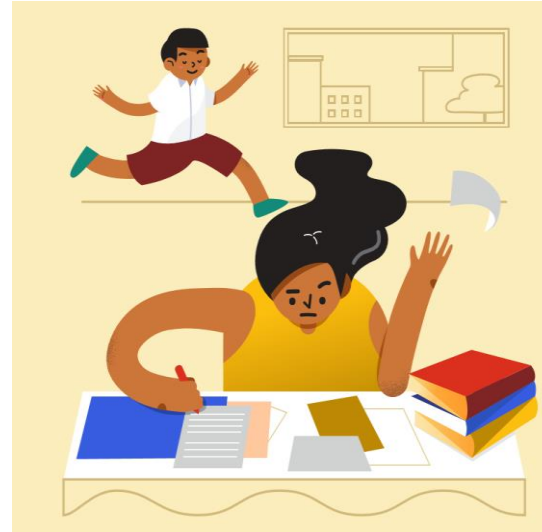


PARENTS AS PARTNERS

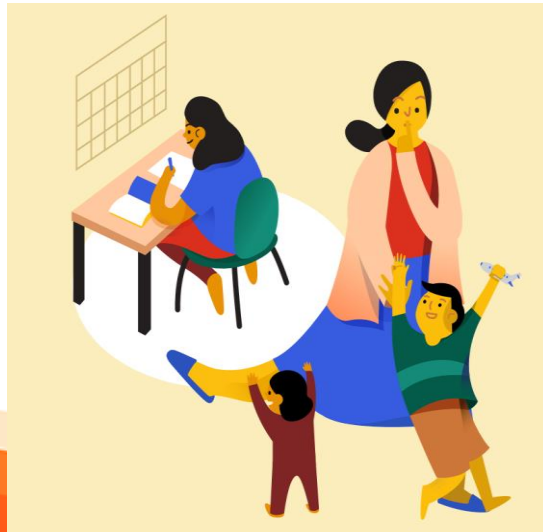
**Set up
good home
routines**



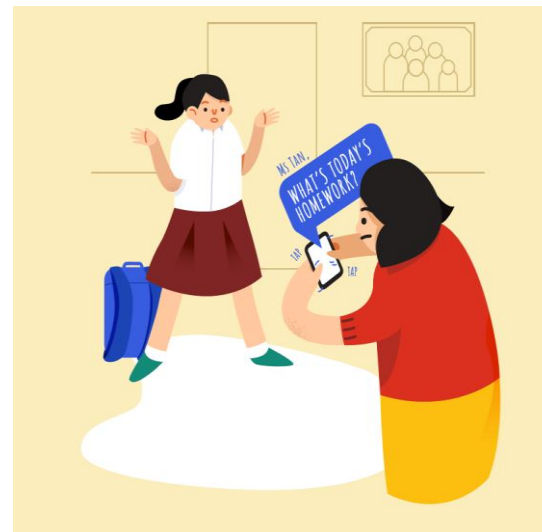
**Support
their
homework**



**Set up a
conductive
home
environment**



**Develop
independence
and
responsibility**





Every Fuhua Gem – Learner, Leader & Innovator
Creating Opportunities • Leading Learning • Building Communities

21st CC Curriculum for Deeper Learning





OUR PHILOSOPHY

EVERY CHILD AS PROTAGONIST
EVERY TEACHER AS RESEARCHER & DESIGNER
EVERY PARENT AS PARTNER
ENVIRONMENT AS 3RD TEACHER

OUR VALUES [RECIPE]

RESPECT
WORTH OF SELF AND OTHERS

CARE
SOCIAL AND CIVIC RESPONSIBILITY

INTEGRITY
TRUE TO SELF AND OTHERS

PERSEVERANCE
DETERMINED TO GO THE EXTRA MILE

EXCELLENCE
COMMITMENT TOWARDS EXCELLENCE AND LEARNING

OUR VISION

Every Fuhua Gem – Learner, Leader & Innovator

OUR MISSION

CREATING OPPORTUNITIES · LEADING LEARNING · BUILDING COMMUNITIES

OUR OUTCOMES

LIFELONG LEARNER

- 1.1 perseveres and takes responsibility for one’s learning
- 1.2 works effectively in teams
- 1.3 thinks critically and communicates

CITIZEN LEADER

- 2.1 has a strong sense of right and wrong
- 2.2 receives with a grateful heart and contributes beyond
- 2.3 serves and lead in bettering the lives of others

TECH-SAVVY INNOVATOR

- 3.1 uses technologies to construct knowledge
- 3.2 explores solutions to real-world problems
- 3.3 produces creative artefacts

CURRICULUM DESIGN & PROGRAMME DEPLOYMENT

Reggio- Inspired Curriculum Philosophy
Understanding by Design (UbD) Curriculum Framework
Transdisciplinary & Inter-disciplinary Integration
Inquiry-Based; Project-Based Learning

Lickona Model for Character Development
House System for Social & Emotional Integration
Seamless NE Integrated PACE Programme
Integrated & Supportive Co-Curricular Programme

21st Century Competencies Development
Design Thinking; Future Problem Solving Protocols
Programmes for Gifted & Talented
Harnessing Information Communication Technology

OUR CURRICULUM FOCI

Deeper Learning: Seeing Patterns; Making Connections; Application of Learning

Transdisciplinary & Inter-disciplinary Integration



Meaningful & Purposeful Integration :

1. Learning outcomes
2. 21st CC- Creativity, Collaboration, Communication, Critical Thought
3. Subject-Specific Competencies
4. Learning Dispositions

Technologically-Enabled Pedagogies



To foster:

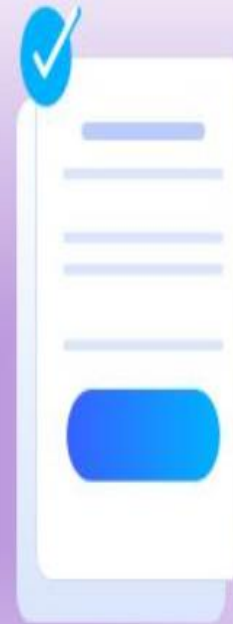
1. collaborative learning
2. creative production

Learner-Centred and Balanced Assessments

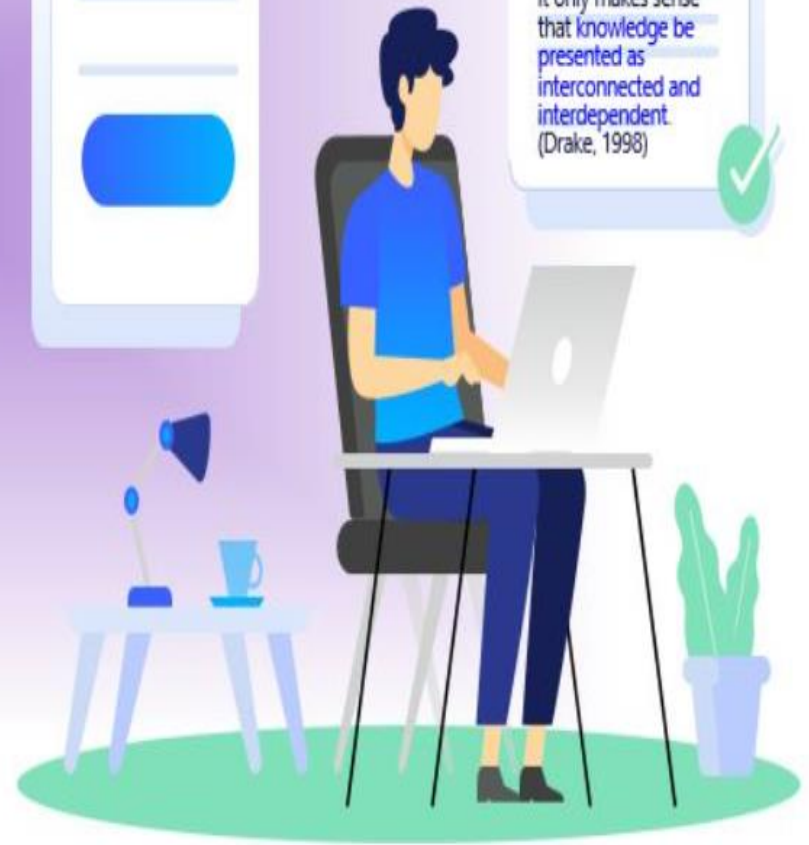


Implement practices to:

1. Reduce the over-emphasis on academic grades
2. Focus on the holistic development

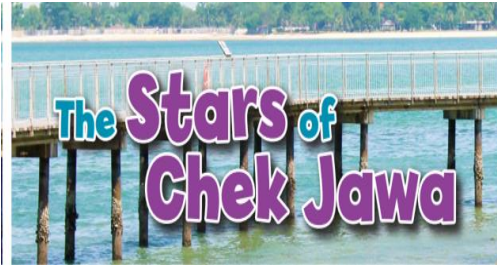


The world we are living in is **changing**, and education must change with it. If we live in an **interconnected and interdependent** world, it only makes sense that **knowledge** be presented as **interconnected and interdependent**. (Drake, 1998)



Language Learning

Different Genres
(purpose, audience, context)



Skills Development

Which are the main verbs? Which are the helping verbs?

helping verb, main verb
She is thinking about going to the zoo

helping verb, main verb
tomorrow, I will go with her. However, it

helping verb, main verb
may rain.

a modal that shows you are sure to do the action

shows that the action is in the present

a modal that shows it is possible that something would happen

Application
(knowledge, skills, competencies)



Mathematics and Science Learning

- Make observations and identify patterns
- Inculcate the spirit of inquiry
- Make connections to real world contexts



ASSESSMENT UPDATES

Removal of Mid-Year Examination *w.e.f. 2023 for P3 to P6*

- To pace out teaching and learning
- To deepen students' learning through meaningful connections
- To further enhance holistic development to develop 21st CC
- To develop the passion for learning; pursue interests and extend learning beyond the confines of the classroom



Balanced and Learner-Centred Assessment

- Fit for purpose
- Emphasis on the learning process; 21st CCs; learning dispositions
- Take ownership for their learning
- Set own goals, reflections and progress monitoring

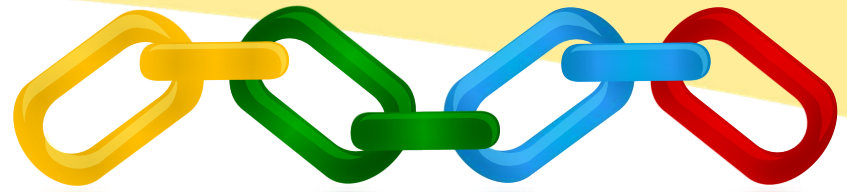
Throughout the year, we use a variety of assessment strategies:

Daily class work
Group discussions
Quizzes
Oral presentations
Performance tasks
Project work



Weighted assessments
End of Year Exams





PROGRAMME DESIGN

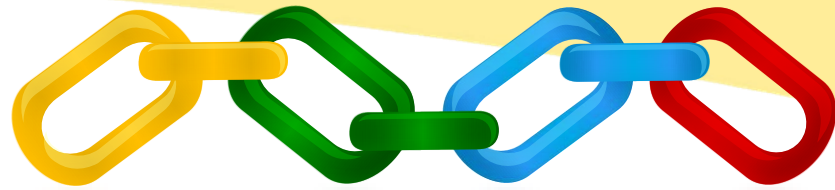
- Project-based Learning for P1 to P6
- Interdisciplinary Integration
- Thematic Focus – Singapore Green Plan 2030

LEARNING AIMS

- Provide opportunity to synthesise knowledge from various areas of learning
- Apply the knowledge critically and creatively to real life situations.
- Acquire skills like collaboration, communication and independent learning
- Prepare for lifelong learning and challenges ahead



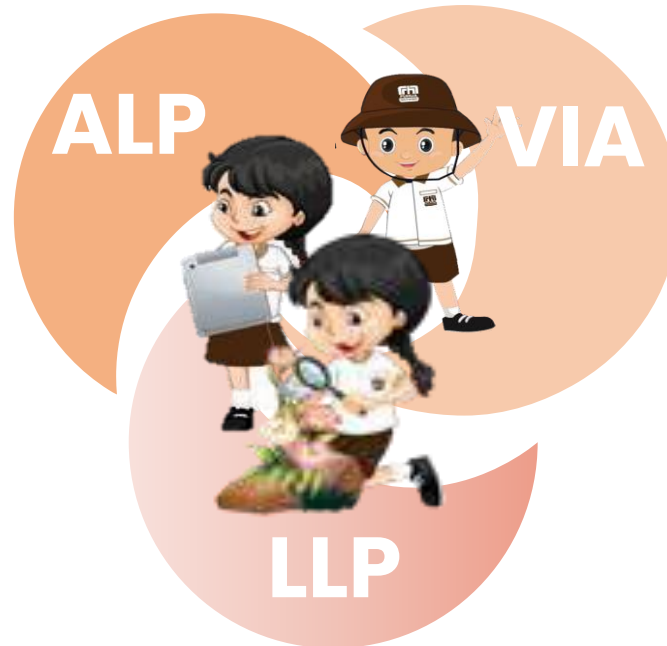
FUHUA GEM+



LINKS AND CONNECTIONS

TECH-SAVVY INNOVATOR

Uses technologies to construct knowledge and explores solutions to real world problems



CITIZEN LEADER

Serves and leads in bettering the lives of others

LIFE-LONG LEARNER

Thinks Critically and Communicates Effectively on Sustainability Issues

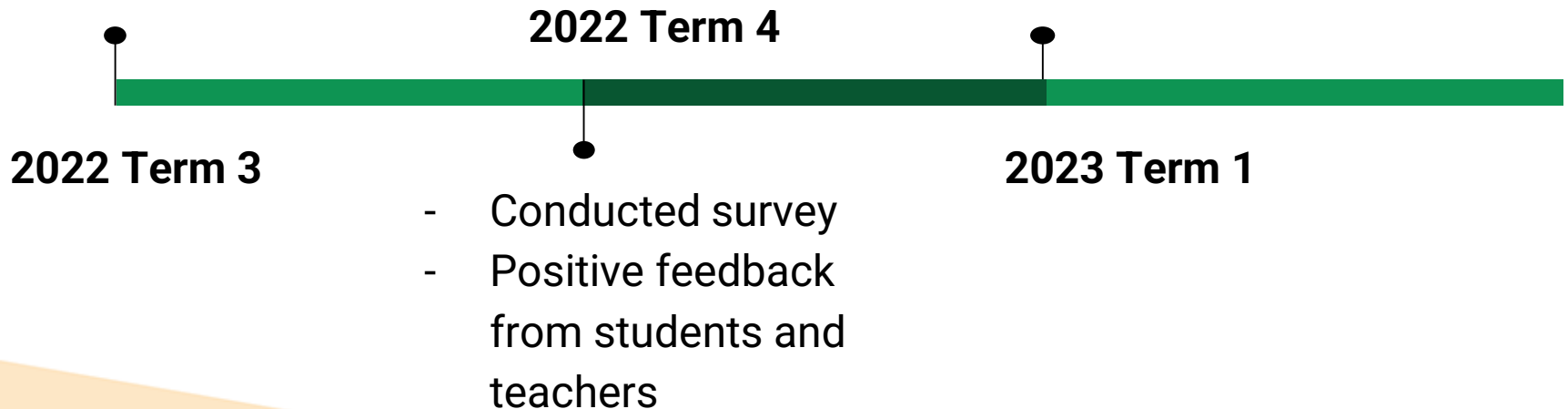


Every Fuhua Gem – Learner, Leader & Innovator
Creating Opportunities • Leading Learning • Building Communities



Experimenting 1:1 Computing

- Pilot class 3 Trust
- 1 month
- Learning with iPad
- Dipstick survey with parents for selected classes
- Currently reviewing
- Updates at later date



- Thank You -



Every Fuhua Gem – Learner, Leader & Innovator
Creating Opportunities • Leading Learning • Building Communities

