

# 21st Century Curriculum for Deeper Learning Primary 5 & 6

24 February 2023  
0800h – 0830h



# PROGRAMME

- 1** Welcome & Introduction
- 2** Student Development Experiences
- 3** 21st CC Curriculum for Deeper Learning
- 4** Safety and Security Updates
- 5** Q & A Session



# Student Development Experiences

What is the new SDE initiated at Fuhua?

- iLOVE which stands for I Look out for Opportunities for my Valuable Experiences
- NOT the LOVE in Frank Sinatra's song ya.

iLOVE programme will commence at the end of this term which is very soon, taking place 3 days a week

- What are the days that we will have iLOVE activities?
- Tuesday, Wednesday & Friday



# Upper Primary Support Programme

## Term 1 and 2

- Small group support lessons for all subjects
- Targeted group to address misconception
- Face to face guidance

## Upcoming March Holidays

- For selected P6 students (EL, MT, Math) – parents will be informed via PG

## Term 3 and 4

- CCA will be suspended for P6 students
- The 2 hours slot will be replaced with lessons
  - ✓ English, Mother Tongue, Maths and Science
- Primary 5 to continue with small group support lessons for all subjects



# Preparing for PSLE

Please refer to the pre-reading slides sent out via PG on 17 Feb (Fri) as well as our school website and MOE website for more information on the following PSLE matters:

- PSLE Achievement Level Scoring
- Direct School Admission
- Full Subject Based Banding in Secondary Schools  
(Removal of Express, NA and NT streams)
- Secondary School Selection



# PARENTS AS PARTNERS

Communicate regularly with your child's teachers on

- your child's progress in school
  - Academic
  - Non-academic
  - Learning dispositions

**via emails  
and phone  
calls**

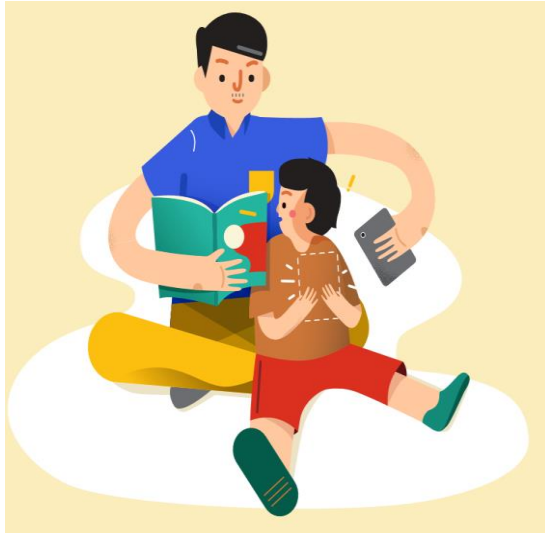
- ways to support your child at home

**Please do not wait till exams are  
nearing to find out about your  
child's progress.**

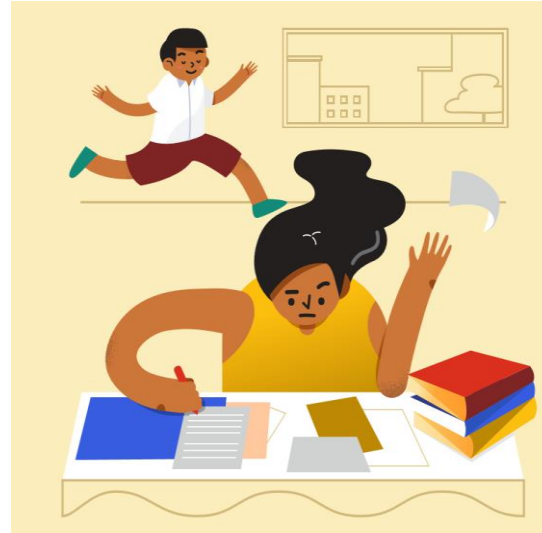


# PARENTS AS PARTNERS

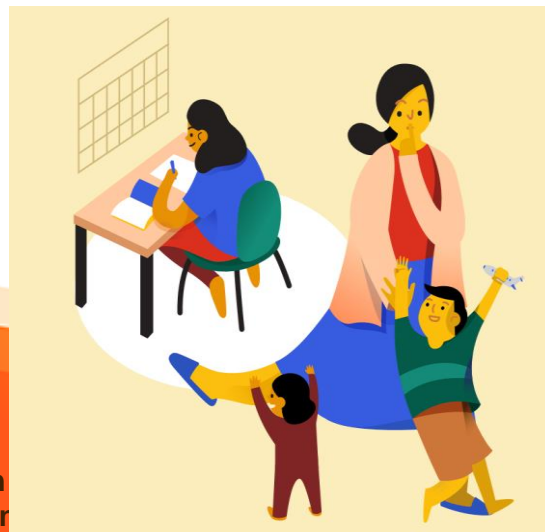
**Set up good home routines (e.g. draw up a schedule for learning and play)**



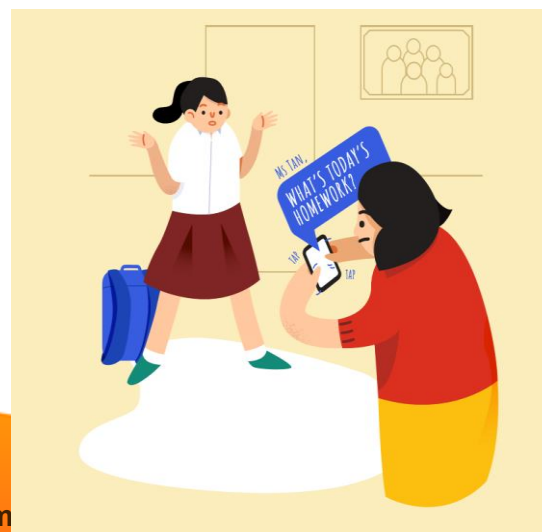
**Encourage your children to complete their homework on time and do their revision consistently**



**Set up a conducive home environment for learning**



**Guide your child to be responsible students and take ownership of their learning and revision**



# 21st CC Curriculum for Deeper Learning







## OUR PHILOSOPHY

EVERY CHILD AS PROTAGONIST  
EVERY TEACHER AS RESEARCHER & DESIGNER  
EVERY PARENT AS PARTNER  
ENVIRONMENT AS 3<sup>RD</sup> TEACHER

## OUR VALUES [RECIPE]

**RESPECT**  
WORTH OF SELF AND OTHERS

**CARE**  
SOCIAL AND CIVIC RESPONSIBILITY

**INTEGRITY**  
TRUE TO SELF AND OTHERS

**PERSEVERANCE**  
DETERMINED TO GO THE EXTRA MILE

**EXCELLENCE**  
COMMITMENT TOWARDS EXCELLENCE AND LEARNING

## OUR VISION

Every Fuhua Gem – Learner, Leader & Innovator

## OUR MISSION

CREATING OPPORTUNITIES · LEADING LEARNING · BUILDING COMMUNITIES

## OUR OUTCOMES

### LIFELONG LEARNER

- 1.1 perseveres and takes responsibility for one’s learning
- 1.2 works effectively in teams
- 1.3 thinks critically and communicates

### CITIZEN LEADER

- 2.1 has a strong sense of right and wrong
- 2.2 receives with a grateful heart and contributes beyond
- 2.3 serves and lead in bettering the lives of others

### TECH-SAVVY INNOVATOR

- 3.1 uses technologies to construct knowledge
- 3.2 explores solutions to real-world problems
- 3.3 produces creative artefacts

## CURRICULUM DESIGN & PROGRAMME DEPLOYMENT

Reggio- Inspired Curriculum Philosophy  
Understanding by Design (UbD) Curriculum Framework  
Transdisciplinary & Inter-disciplinary Integration  
Inquiry-Based; Project-Based Learning

Lickona Model for Character Development  
House System for Social & Emotional Integration  
Seamless NE Integrated PACE Programme  
Integrated & Supportive Co-Curricular Programme

21<sup>st</sup> Century Competencies Development  
Design Thinking; Future Problem Solving Protocols  
Programmes for Gifted & Talented  
Harnessing Information Communication Technology

# OUR CURRICULUM FOCI

Deeper Learning: Seeing Patterns; Making Connections; Application of Learning

## Transdisciplinary & Inter-disciplinary Integration



Meaningful & Purposeful Integration :

1. Learning outcomes
2. 21<sup>st</sup> CC- Creativity, Collaboration, Communication, Critical Thought
3. Subject-Specific Competencies
4. Learning Dispositions

## Technologically-Enabled Pedagogies



To foster:

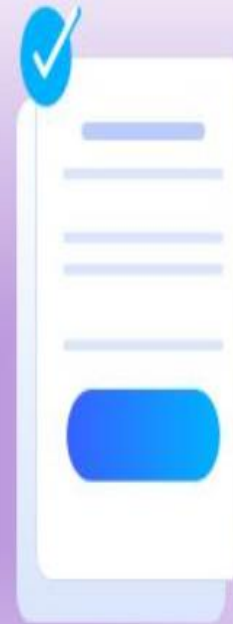
1. collaborative learning
2. creative production

## Learner-Centred and Balanced Assessments

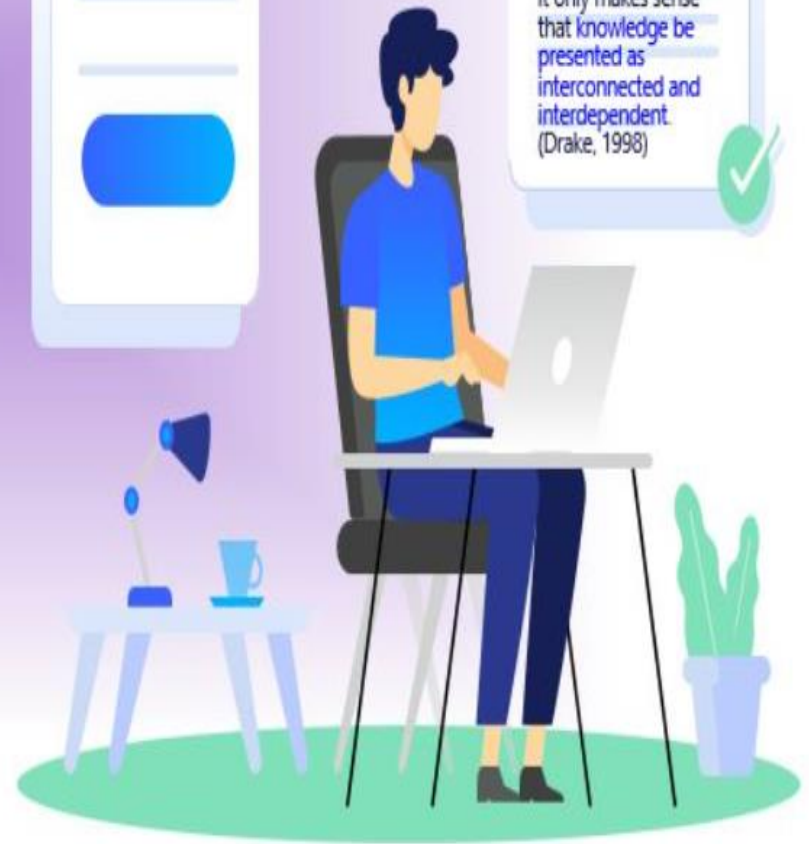


Implement practices to:

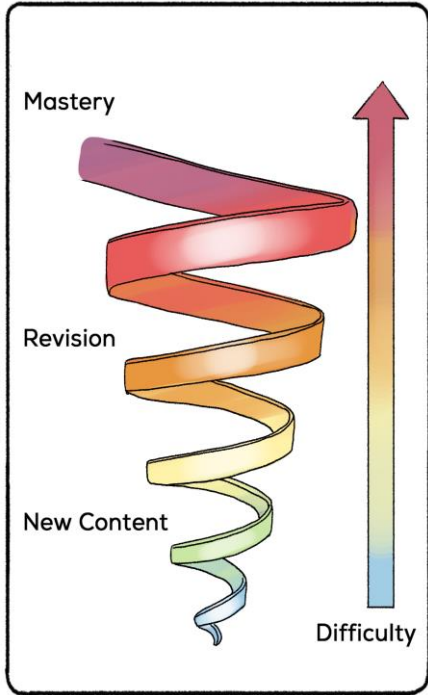
1. Reduce the over-emphasis on academic grades
2. Focus on the holistic development



The world we are living in is **changing**, and education must change with it. If we live in an **interconnected and interdependent world**, it only makes sense that **knowledge be presented as interconnected and interdependent**. (Drake, 1998)

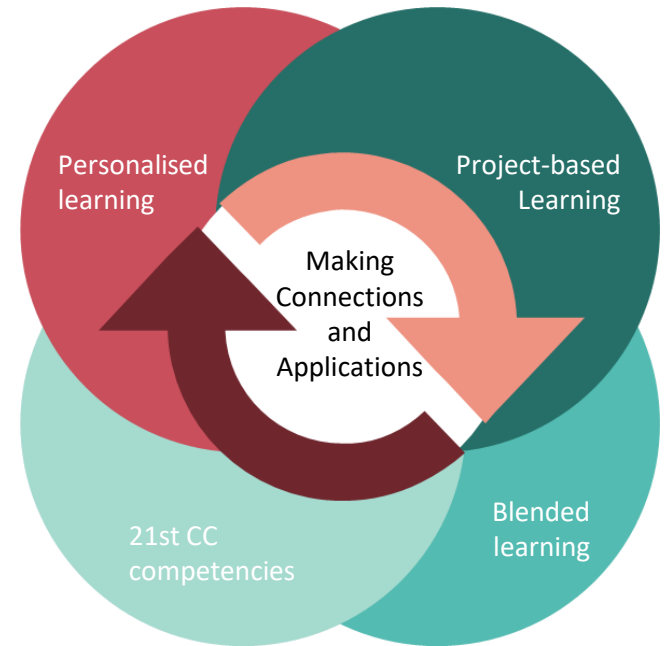


# Deeper Learning...



Fundamentals to Complexities  
Breadth and Depth

See Patterns  
Making Connections  
Applications in Different Contexts

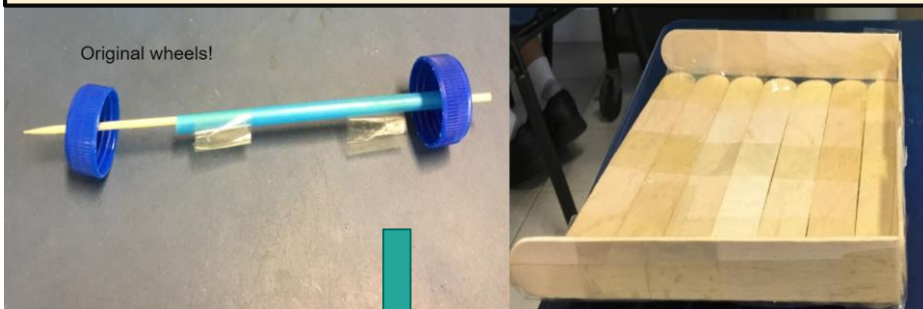


# What does it look like?

## Integration & Application

- Integration of concepts and skills from Maths and Science
- Application in Makers Project

### 1. First Prototype



### 4. Collating and Presenting Data

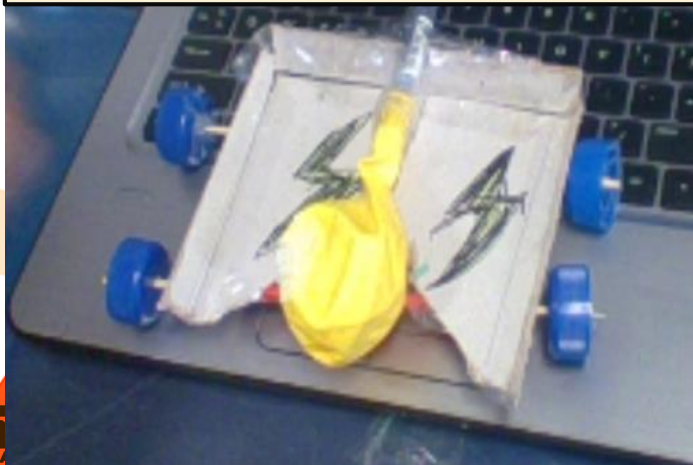
1st Model - 1st Result - 4.5 m in 4 sec. That is 1.125 m/ sec.

2nd Model - 1st Result - 3.1m in 2sec . That is 1.55m /sec

3rd Model - 1st Result - 4.2m in 3 sec. That is 1.4m/ sec

4th Model - 1st Result - 6m in 3 sec. That is 2m/ sec.

### 2. Second Prototype



### 3. Third Prototype





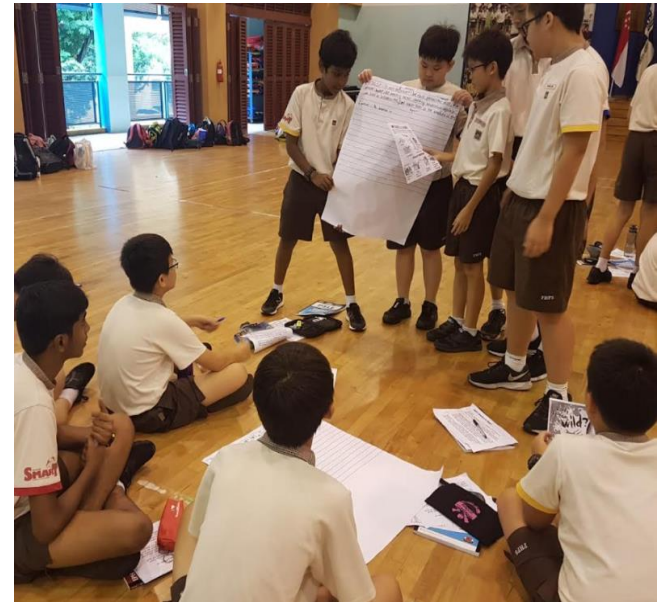
# What does it look like?

## English and Mother Tongue Languages

- Opportunities to read, listen to and view texts of greater difficulty levels so that students can also create a broader range of texts.
- Communicate effectively in different social situations.



**Working collaboratively with others to share ideas**



**Eliciting feedback from peers**



# ASSESSMENT UPDATES

## Removal of Mid-Year Examination *w.e.f. 2023 for P3 to P6*

- To pace out teaching and learning
- To deepen students' learning through meaningful connections
- To further enhance holistic development to develop 21st CC
- To develop the passion for learning; pursue interests and extend learning beyond the confines of the classroom



# Balanced and Learner-Centred Assessment

- Fit for purpose
- Emphasis on the learning process; 21<sup>st</sup> CCs; learning dispositions
- Take ownership of their learning
- Set own goals, reflections and progress monitoring

**Throughout the year, we use a variety of assessment strategies:**

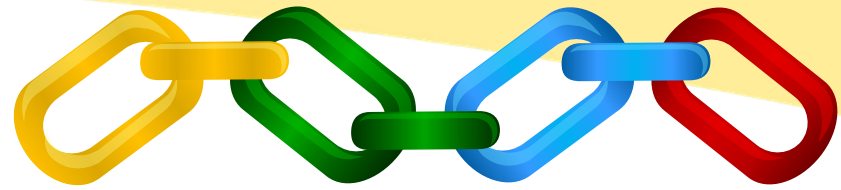
Daily class work  
Group discussions  
Quizzes  
Oral presentations  
Performance tasks  
Project work



Weighted assessments  
End of Year Examinations



# FUHUA GEM+



*LINKS AND CONNECTIONS*

## PROGRAMME DESIGN

- Project-based Learning for P1 to P6
- Interdisciplinary Integration
- Thematic Focus – Singapore Green Plan 2030

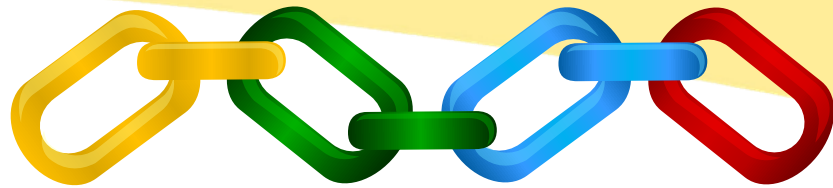
## LEARNING AIMS

- Provide opportunity to synthesise knowledge from various areas of learning
- Apply the knowledge critically and creatively to real life situations.
- Acquire skills like collaboration, communication and independent learning
- Prepare for lifelong learning and challenges ahead





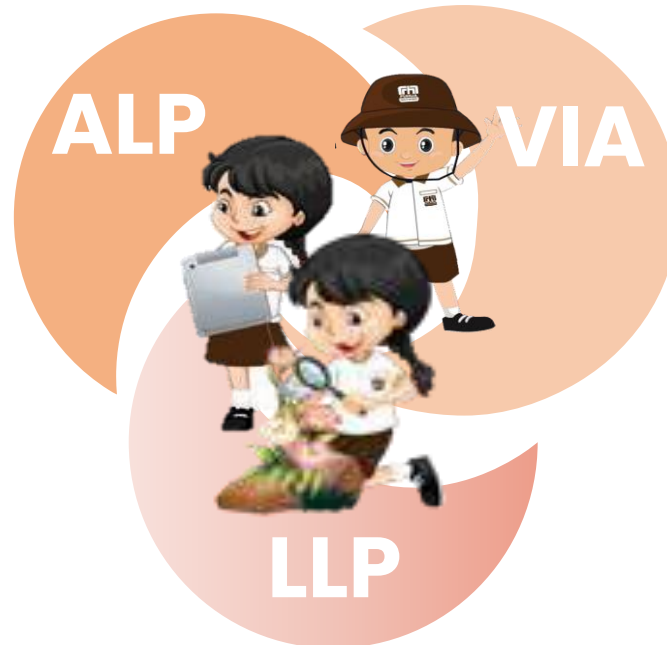
# FUHUA GEM+



*LINKS AND CONNECTIONS*

## TECH-SAVVY INNOVATOR

Uses technologies to construct knowledge and explores solutions to real world problems



## CITIZEN LEADER

Serves and leads in bettering the lives of others

## LIFE-LONG LEARNER

Thinks Critically and Communicates Effectively on Sustainability Issues



Every Fuhua Gem – Learner, Leader & Innovator  
Creating Opportunities • Leading Learning • Building Communities





Every Fuhua Gem – Learner, Leader & Innovator  
Creating Opportunities • Leading Learning • Building Communities

# Safety and Security Updates



# CURRENT VS NEW DISMISSAL PROCEDURES

Current Situation	Changes with effect from Mon 27 Feb 2023
<p>P1 &amp; P2 parents enter via Gate C to pick up children at Basketball Court</p> <p>P1 &amp; P2 dismissed from Basketball Court with parents and exit via Gate B</p>	<p><b>P1 &amp; P2 parents will not enter school</b></p> <p><b>P1 &amp; P2 dismissed directly from classroom to exit from Gate B</b></p>
<p>P3 &amp; P5 dismissed at Gate B</p>	<p><b>P3 – P6 dismissed at Gate A</b></p>
<p>P4 &amp; P6 dismissed at Gate A</p>	
<p>Siblings wait at Playground and exit via Gate B</p>	<p><b>Siblings wait at Playground</b> and exit via Gate B <b>(no change)</b></p>
<p>External SCC staff enter school via Gate B to pick students and exit with students from Gate B</p>	<p><b>External SCC staff to enter via Gate C and exit with students via Gate C</b></p>



# DISMISSAL PROCEDURES

## WEF MONDAY 27 FEBRUARY 2023

