

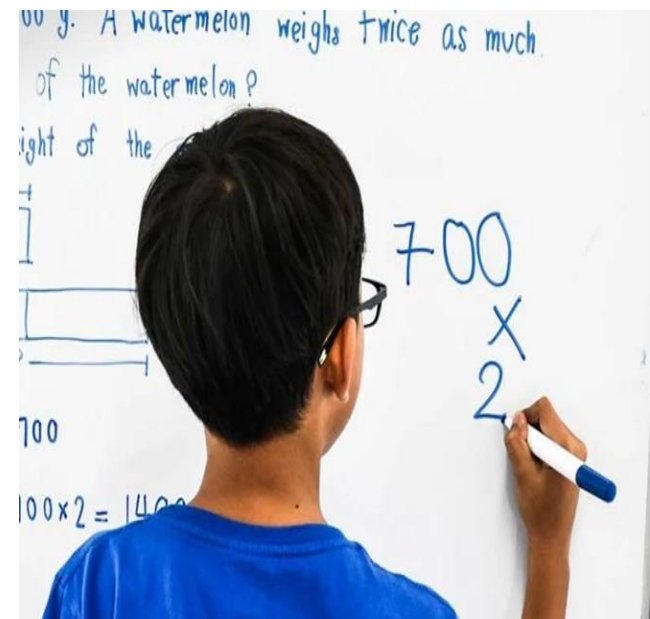
Primary 4 Subject-based Banding (SBB)

Pre-Engagement Session Reading



BACKGROUND

- Implemented in **2008**
- Premise for **ability-driven education**
- Students can take a **mix of standard and foundation subjects** through Subject-based Banding (SBB) at P5 and P6.
- Allow your child to:
 - **Stretch their potential** in subjects they are strong in.
 - **Build up their understanding in subjects** they need more help with.



Subject Combinations



P5 SUBJECT COMBINATIONS

P4 results

Your child may be recommended to take

Passes all 4 subjects and performs very well in Mother Tongue Language

4 standard subjects & Higher Mother Tongue Language

Passes all 4 subjects

4 standard subjects

Passes 3 subjects

4 standard subjects

Passes 2 subjects or less

4 standard subjects or

3 standard subjects + 1 foundation subject

2 standard subjects + 2 foundation subjects

1 standard subject + 3 foundation subjects

4 foundation subjects

P5 SUBJECT COMBINATIONS

Option	Code	Subject combination
1	4S1H	EL / MA / MT / SCI / HMT
2	4S	EL / MA / MT / SCI
3	3S1F	EL / MA / MT / SCI with FMA / FSC / FMT
4	3S	EL / MA / SCI (<i>Exempted from MT</i>)
5	2S2F	EL / SC / MA / MT + FMA / FMT / FSC
6	4F	FEL / FMA / FMT / FSC
7	3F	FEL / FMA / FSC (<i>Exempted from MT</i>)



Criteria in offering subject combinations

- Schools will **recommend the combination of standard and foundation subjects** based on the following:
 - Student's **motivation and performance** in each subject
 - Student's **ability to cope** with a particular subject combination



At THE END OF P5

**STUDENTS TAKE A SUBJECT COMBINATION
DETERMINED BY THE SCHOOL**

**ALL OTHER
STUDENTS**



**CONTINUE WITH
THE SAME SUBJECT
COMBINATION**



**STUDENTS WHO
EXCEL**



**ADJUSTMENTS TO
SUBJECTS OR
CONTINUE WITH THE
SAME SUBJECT
COMBINATION**



**STUDENTS NOT
COPING WITH
DEMANDS AT P5**



**SWITCH SOME
SUBJECTS TO
FOUNDATION LEVEL**



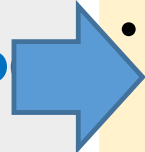
**PRIMARY SCHOOL LEAVING EXAMINATION (PSLE) AT
THE END OF P6**



SBB JOURNEY

At Primary 4

- Sits for the **school exams**.
- School **recommends a subject combination** based on P4 results.
- Fill up an **option form**.



At Primary 5

- Takes **their preferred subject combination**.
- School **assesses your child's ability** to cope with the subjects.
- **Adjustments to the subject levels** are made if needed.



At Primary 6

- Takes **the subject combination recommended** by the school and sits for PSLE.
- Progression **to secondary level** depends on PSLE results.
- If your child **excels in certain subjects**, they can pursue higher level options.



Subjects at the Foundation Level



SUBJECTS AT FOUNDATION LEVEL

- Offering subjects at the foundation level is **not a disadvantage to your child.**
- Offering subject at Foundation level **enables students to focus on building up strong fundamentals** in these subjects and **better prepares them for progression** to secondary school.



Higher Mother Tongue Language



TAKING HIGHER MOTHER TONGUE

AFTER P4

P5 HMT Classes

HMT Textbooks

Additional 1-hour lesson (outside curriculum hours)

Sit for MT & HMT Papers

P5 MT Classes

MT Textbooks

MT Papers

- Excel in all standard subjects.
- Pass HMT

No

YES

P6 HMT Classes

HMT Textbooks

MT & HMT Papers

P6 MT Classes

MT Textbooks







MT Papers



Using HCL for Admission into SAP Schools

Students who take HCL will receive a posting advantage when applying to SAP schools

Students will be considered for admission to SAP schools in the follow order:

1st		7	NO HCL
2nd		8	DISTINCTION
3rd		8	MERIT
4th		8	PASS
5th		8	NO HCL
6th		9	DISTINCTION

Students with better PSLE scores will be posted first, even if they did not take HCL

Amongst students with the same PSLE score, those with better HCL grades will be posted first.



List of SAP Schools

Anglican High School

Catholic High School

CHIJ Saint Nicholas Girls' School

Chung Cheng High School (Main)

Dunman High School

Hwa Chong Institution

Maris Stella High School

Nan Chiau High School

Nan Hua High School

Nanyang Girls' High School

River Valley High School



Eligibility for Higher mother Tongue (HMTL) in secondary schools

(i) PSLE Score of 8 or better

OR

(ii) PSLE Score of 9 to 14 inclusive; and attain

- AL1 / AL2 in MTL or
- Distinction / Merit in HMTL

- The **eligibility criteria** for taking HMTL is intended to ensure that students can cope with the additional load of HMTL
- For **students who do not meet the above criteria**, secondary schools will continue to have the flexibility to offer HMTL to students.



Parent's Role

Encourage your child to **recognize** that every student is unique and has their own strengths and weaknesses.

Guide your child to **find the right balance** between school work as well as their co-curricular activities, so that they **can discover their strengths and talents** and excel in them.



If you have further questions, please click on
this link <https://ahaslides.com/FHPS34>
or scan
the QR code below and key in your question.

