

# WELCOME TO FUHUA PRIMARY SCHOOL

**P1 2024 e-Orientation Briefing**  
**Wed 8 Nov 2023**



WEDNESDAY 8 NOVEMBER  
4.00 PM TO 6.00PM



# P1 2024 E-ORIENTATION



Information presented during the e-Orientation will be shared  
in the school website after 8 November.



## PARENT QUESTIONNAIRE

To be completed by  
**4 November 2023!**



**MEETING ID: 821 5024 6732**  
**PASSCODE: 2024P1**

Login format: **NAME\_GROUP**  
(e.g. LisaOng\_A1)



Scan QR code for a  
virtual tour of FHPS

For more information or enquiry:  6562 4370  [fhps@moe.edu.sg](mailto:fhps@moe.edu.sg)  [www.fuhuapri.moe.edu.sg](http://www.fuhuapri.moe.edu.sg)



# AGENDA

## 1. Preparing for Primary 1

- Guiding your child to be independent
- Preparing for Day 1
- School Rules

## 2. Home-School Partnership

- Information channels
- Communicating with teachers

## 3. General Information

- Buying books & uniforms
- School hours
- Arrival and dismissal procedures
- Picking up your child early
- Buying food at canteen
- Student protection plan
- Photos / videos of students
- Resources
- School Vendors

## 4. First Week of School



# PREPARING FOR PRIMARY 1



Every Fuhua Gem – Learner, Leader & Innovator  
Creating Opportunities • Leading Learning • Building Communities



# Guiding your child to be independent

Encouraging our young ones to learn and complete some tasks by themselves can help them be responsible, independent and confident over time.

Start by guiding them through simple tasks.

- Getting dressed for school.
- Changing into PE attire for PE lessons.
- Packing and organising their school bag.



© Ministry of Education, Singapore

What you can do at home

CREATE A **CHECKLIST** TOGETHER



Have a discussion with your child on the checklist he/she will have to go through before bed and how to pack his/her school bag.

Help your child to develop responsibility and self-management skills by creating a checklist together with him/her to get ready for school!



# Guiding your child to be independent

Give them time to learn how to do these tasks independently.

- Using the toilet and cleaning up after themselves.
- Practising good personal hygiene (e.g. washing and sanitising of hands, brushing of teeth, putting on and safekeeping of masks).



© Ministry of Education, Singapore

# Guiding your child to be independent

- Ordering food at the canteen, managing their money and making healthy food choices.
- Asking for help. This could be from teachers, friends, school staff or any adult in school. Let them know it is okay to seek help when needed and guide them on how to do it.



Help your child make healthy food choices with this [Fun With Food Activity Book](#).

[CLICK HERE](#)



©Ministry of Education, Singapore



# SCHOOL RULES





# SCHOOL RULES

- Love Yourself
- Love Others
- Love Our School
- Love Our Country



# LOVE YOURSELF

- Students are to wear the **prescribed school uniform / PE attire** without any modification
- The **name tag** should be sewn on the school shirt / blouse and PE T-shirt
- **PE T-shirts** are to be worn on days of house meetings and designated PE days
- The **sun hat** is part of the school uniform and is used during learning journeys.
- Wear **black sports shoes with black shoelaces and school socks.**



# SCHOOL UNIFORM



## ATTIRE FOR BOYS AND GIRLS

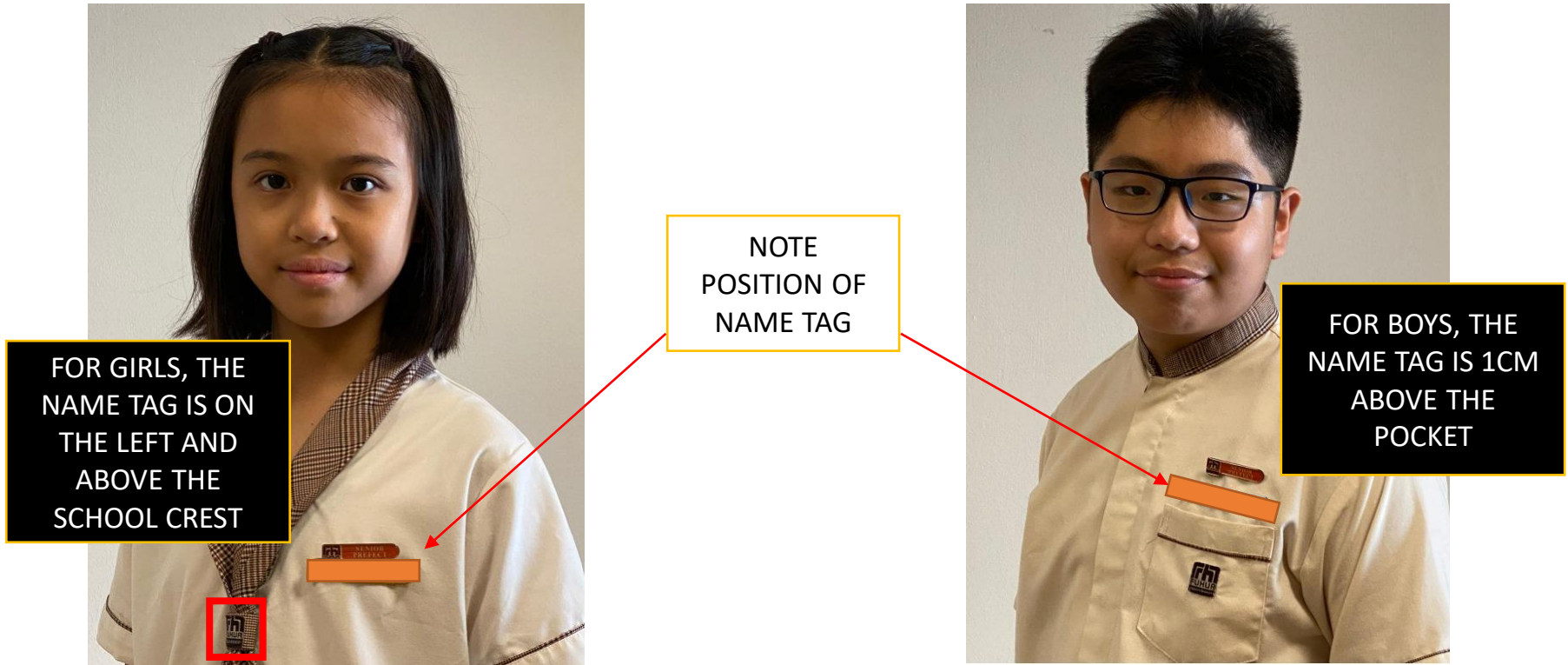
Modifications to the school uniform / PE attire are not allowed



## PE ATTIRE FOR BOYS AND GIRLS



# SCHOOL UNIFORM – NAME TAGS



## ATTIRE FOR BOYS AND GIRLS



# SCHOOL SHOES AND SUN HAT



- Black Sports Shoes with black shoelaces **ONLY**.
- School socks or white socks that are above the ankles.
- School socks and shoes can be purchased from the uniform supplier.
- Sun hat can be purchased from the uniform supplier.
- It is used during Learning Journeys or students can use it on the way home on sunny days.



# SCHOOL BAG



- Buy a school bag of lightweight material that can be carried as your child moves to different classes. Do not buy trolley bags as these can be bulky and difficult for your child to use on the stairs
- Label your child's bag, water bottle, wallet, pencil case and other items clearly
- Pack the bag according to the timetable for the day. If your child forgets to bring any materials, he / she must take responsibility for it. Forgotten items are not to be brought to school by parents / caregivers.
- Lockers are available for students to leave materials that may not be needed on a daily basis





# LOVE YOURSELF

- Hair should be well-combed and **not coloured / dyed / highlighted / gelled**.
- Hair should be **short and neat**, with the fringe above the eyebrows. Spiky hairstyles are not allowed.
- Girls may use **black / brown hair accessories**.
- **Fingernails** must be kept short and clean.
- **Jewellery, ornaments or fashion accessories** are not to be worn. Girls may wear a small pair of ear studs.



# LOVE YOURSELF

- Students must be **punctual for school** – reach school before 7.30am.
- **Students are strongly discouraged from bringing mobile devices** (handphones / smart watches / ipads) **to school**.
- Students may ask for assistance at the General Office, if they need to contact their parent.
- If a student needs to bring a mobile phone / smart watch for communicating with parents, it should only be used with permission from teachers and only outside the General Office (Meeting Place). Otherwise, the device must be **switched off during school hours**.
- Students will need to **take responsibility** for their mobile devices as the school will not be responsible for any damage / loss.
- Mobile devices will be **confiscated** if students do not comply with the rules of use.





# LOVE OTHERS



- Students must be courteous, kind and respectful to their peers and school staff.
- **The school does not condone bullying.** Action will be taken against students caught bullying.
- Students are also **not allowed to have in their possession any weapon or weapon-like item** which is used or intended to be used to cause harm to others.



# LOVE OUR SCHOOL

- Students are expected to keep the school clean.
- Eating is allowed in the canteen only.
- For a safe environment for all, students are expected to abide by safe rules of play.



# LOVE OUR COUNTRY

- Students who are Singapore Citizens are to sing the National Anthem and take the pledge.



# HOME-SCHOOL PARTNERSHIP



Every Fuhua Gem – Learner, Leader & Innovator  
Creating Opportunities • Leading Learning • Building Communities



# INFORMATION CHANNELS

PARENTS	STUDENTS
Parents Gateway (PG) <ul style="list-style-type: none"> <li>• Letters / Information</li> <li>• Consent Forms</li> </ul>	Morning Assembly
School Website <a href="http://fuhuapri.moe.edu.sg/">http://fuhuapri.moe.edu.sg/</a> School Instagram <a href="#">fuhua_pri</a> School Facebook <a href="https://www.facebook.com/FuhuaPrimary">https://www.facebook.com/FuhuaPrimary</a> Email <a href="mailto:fhps@moe.edu.sg">fhps@moe.edu.sg</a>	CCA Boards
Student Organiser	Student Learning Space (SLS)



# PARENTS GATEWAY

NAME OF CHILD

FROM MOE

MINISTRY OF EDUCATION  
Posted on: 8 Oct 2023

## Advisory for the Management of Haze Situation

Dear Parents/Guardians,

...

Delete

SEK KOP...  
Posted on: 3 Oct

Zoom Link for JC2 Graduation Ceremony: Fri  
6 Oct, 9.30 a.m.

...

Delete

## Services



Declare travels

Not available



School Calendar



Parenting Resources



SchoolFinder



eGIRO Setup



Edusave Standing Order



Financial assistance

Download Parents Gateway app on your mobile phone, if you have not done so.



# COMMUNICATING WITH TEACHERS

- Communication times: **7.00 a.m. – 5.00 p.m. on school days**
- Communicate via email / message in student organizer / message left at General Office.
- For face-to-face meetings, make appointment 3 working days in advance to avoid disappointment.
- Response time for queries:
  - 3 working days (general query)
  - 7 working days (query requires some investigation)
  - 21 working days (query with complexities)



# CONTACTING DURING EMERGENCIES

- Ensure that parents' / guardians' contact numbers are always updated.
- Inform us of any pre-existing medical condition as diagnosed by doctor. Indicate clearly “what will happen i.e. symptoms”, “whether life threatening” and “what action is needed”.





# GENERAL INFORMATION



Every Fuhua Gem – Learner, Leader & Innovator  
Creating Opportunities • Leading Learning • Building Communities



# WHEN TO BUY BOOKS & UNIFORMS

Dates	Times	Venue
Mon 27 Nov		
Tues 28 Nov		
Wed 29 Nov		
Thurs 7 Dec		
Fri 8 Dec	9am – 3pm	Bookshop & Basketball Court (uniforms)
Thurs 14 Dec		
Fri 15 Dec		
Thurs 28 Dec		
Fri 29 Dec		



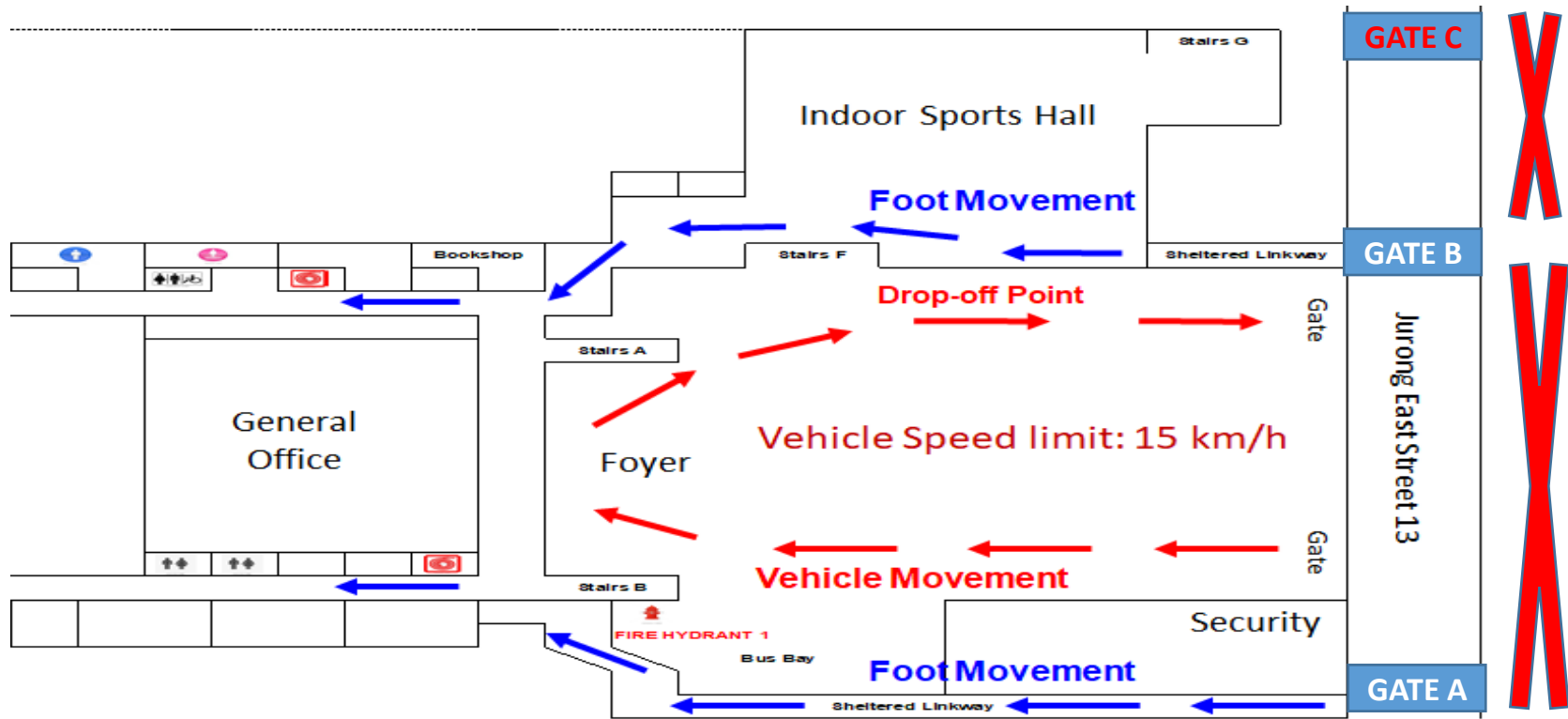
# SCHOOL HOURS

Days	Start Time	Dismissal Time / Gate
Mondays to Fridays	7.30 am (students who arrive after this are considered late)	1.30 pm (for P1 & P2)  Dismissal at Gate B

*Recess is from 9.30 am to 10 am.  
P1 and P4 will share recess times.*



# MORNING DROP-OFF



## Note:

1. Students use Gates A & B at arrival.
2. P1s & P2s use Gate B for dismissal.
3. Do not leave your car unattended while waiting for your child. Park your car at the nearest car park.
4. Do not drop off your child outside the school gates for their own safety.



# PICKING UP YOUR CHILD EARLY

- If your child is unwell, administrative staff will contact you to pick him / her. Your child will not be allowed to leave school alone.
- Register at Guard House and wear the visitor label
- Report to the General Office
- Do not go directly to the classroom as the **Classroom Blocks are strictly out of bounds to all visitors.**
- You will be issued with a slip “**Permission To Leave School Early**” to pass to the security guards when you and your child leave.



# BUYING FOOD AT CANTEEN

w.e.f 03 Jan 2023

## Stall No. 7

(Chinese Rice Stall)

VEGETARIAN  
Food  
is available

Brown Rice/Fried Rice + 1 Meat + 1 Vegetable/Egg + Fruit	\$2.00
Brown Rice/Fried Rice + 1 Meat + 2 Vegetable/Egg + Fruit	\$2.30
Brown Rice/Fried Rice + 2 Meat + 1 Vegetable/Egg + Fruit	\$2.50

### Other Items:

- Drumstick \$0.80
- Yakitori \$0.80
- Additional Soy Sauce Chicken/Sweet & Sour Fish & etc \$0.90
- Additional Veg/Tofu/Egg/Potato/2pcs Meatball/2pcs Wanton \$0.50
- Sushi (Box of 4) \$1.50
  - Vegetarian – Cucumber / Egg
  - Non-Vegetarian – Crabstick



- Steamed Egg in Chicken Broth \$1.00



rh FUHUA PRIMARY SCHOOL

HOME / GENERAL INFORMATION / RESOURCE FOR PARENTS / CANTEEN MENU

## Canteen Menu

School Administration

School Vendors

Guidelines and Policies

Resources for Teachers

Resource for Parents

Resources for Parents

Canteen Menu (New Price w.e.f. 03 Jan 2023)

- 1) [Canteen Stall 1](#)
- 2) [Canteen Stall 2](#)
- 3) [Canteen Stall 3](#)
- 4) [Canteen Stall 4](#)
- 5) [Canteen Stall 6](#)
- 6) [Canteen Stall 7](#)
- 7) [Canteen Stall 8](#)



# BUYING FOOD AT CANTEEN

- Cashless payment is available through the POSB Smart Buddy Watch / ezlink card
- Healthy Meals in School Programme (HMSP) guidelines are followed
- Food prices - \$2.30 / \$2.50
- Menu is available at <https://fuhuapri.moe.edu.sg/general-information/resources-for-parents/canteen-menu>



# HEALTHY LIVING FOR CHILDREN

[Parent Hub: 7-12 Years \(healthhub.sg\)](https://healthhub.sg)



Login

Healthier SG

Health A-Z

Live Healthy

Mental Well-Being

Parent Hub

Health Programmes

Health Services

HOME > PROGRAMMES



## Parent Hub

From pregnancy to raising a teenager, learn the ins and outs of raising a healthy child in this one-stop pregnancy and parenting platform for health information.

CONTRIBUTED BY



Health Promotion Board

# you've got this!

HOME

WE'RE  
EXPECTING

0 - 2  
YEARS

3 - 6  
YEARS

7 - 12  
YEARS

TEENS

EVENTS

We'd love  
to hear from  
you!



Every Fuhua Gem – Learner, Leader & Innovator  
Creating Opportunities • Leading Learning • Building Communities





# STUDENT PROTECTION PLAN

- MOE provides basic insurance coverage for students for immediate help during emergencies.
- Parents are encouraged to take up insurance beyond the MOE insurance coverage.



# PHOTOS / VIDEOS OF STUDENTS

- The school will take photographs / videos of students during school events / competitions. These will be used on our website, Instagram or Facebook page as well as school yearbook for publicity purposes.
- If you do not wish your child to be featured in these materials, please inform the school via the Form Teacher.



# RESOURCES

## [Primary \(schoolbag.edu.sg\)](http://schoolbag.edu.sg)

The screenshot displays the Schoolbag website interface. At the top left is the logo "SCHOOLBAG THE EDUCATION NEWS SITE". To the right, the date "TUESDAY, 24<sup>TH</sup> OCTOBER 2023" and a search bar with a "GO" button are visible. A horizontal navigation menu includes "HOME", "EDUCATION" (highlighted), "FEATURES", "TEACHERS' DIGEST", "MULTIMEDIA", and "FAQ". Social media icons for printer, Facebook, Twitter, YouTube, and RSS are on the right. Below the menu, a breadcrumb trail reads "Home > Education > Primary". The main heading "Primary" is followed by a filter bar with options: "Filter by: Education Features Multimedia Teachers Digest Archive". Below this, a secondary filter bar shows "All Pre-School Primary Secondary Post-Secondary Special Education", with "Primary" selected. On the right, an "Editor's picks" section features a cartoon illustration of two characters with speech bubbles. One says, "HOW DO YOU KNOW IF THE NEWS IS TRUE?" and the other replies, "WELL... IT IS ALL OVER THE INTERNET!"



# SCHOOL VENDORS

Vendor Name	Details
Actlink Marketing Pte Ltd <b>(BOOKSHOP)</b>	<ul style="list-style-type: none"> <li>• Open from 9 am – 3pm</li> <li>• Lunch 1 – 1.45pm</li> <li>• Contact – 9815 1531</li> <li>• Email – <a href="mailto:storders@actlink.com.sg">storders@actlink.com.sg</a></li> <li>• Online orders available</li> </ul>
NewGen Transport Services Pte Ltd <b>(BUS SERVICE)</b>	<ul style="list-style-type: none"> <li>• Contact – Tel: 98393452 / <a href="mailto:operation@newgentpt.com">operation@newgentpt.com</a> (Mr Paul Pang)</li> </ul>
Finest Fashion Centre <b>(SCHOOL UNIFORMS)</b>	<ul style="list-style-type: none"> <li>• Contact – 6466 5697 / 9026 9738</li> <li>• In school from 10 am to 3 pm on Tuesdays</li> </ul>
Nascans Pte Ltd <b>(STUDENT CARE CENTRE)</b>	<ul style="list-style-type: none"> <li>• Contact – <a href="mailto:fhscc@nascans.com">fhscc@nascans.com</a> / 8198 9716</li> <li>• 10 am to 7 pm (during school term)</li> <li>• 7.30 am to 7 pm (during school holidays)</li> </ul>



# FIRST WEEK OF SCHOOL



Every Fuhua Gem – Learner, Leader & Innovator  
Creating Opportunities • Leading Learning • Building Communities



# SCHOOL HOURS & ITEMS TO BRING

DATE	SCHOOL HOURS
TUES 2 JAN 2024	7.30 AM – 11.30 AM <i>(parents are allowed to accompany child on Day 1)</i>
WED 3 JAN 2024	7.30 AM – 11.30 AM
THURS 4 JAN 2024	7.30 AM – 1.30 PM
<b>What to bring</b>	<ul style="list-style-type: none"><li>• Writing Materials (2 pencils, eraser, ruler) in a small pencil case</li><li>• Storybook</li><li>• Care Pack (sanitiser, face mask, tissue paper, wet wipes to be placed in a resealable bag)</li><li>• Thermometer (given by school on day 1)</li></ul>



# Help your child succeed in life

Our children do best when schools and parents work hand in hand to support them. Here are some tips to make this happen...

## Work with the school to know and support your child

- Have regular conversations with teachers in both academic and non-academic areas - this will help you better guide your child's development.
- Check the teachers' preferred mode of communication - they are not required to share their mobile numbers.
- Understand that teachers may not be able to respond to your queries immediately.

## Help your child relate to others

- Work with the teachers to help your child respect differences and resolve disagreements amicably.
- Let the school verify the facts in any incident before taking action to ensure a fair, objective outcome for all parties.

## Help your child develop good habits

- Create a conducive home environment for your child to enjoy reading and to finish his/her homework by himself/herself.
- Encourage your child to live a healthy, balanced life with time for sleep and play.

## Help your child manage himself/herself

- Guide your child in managing his/her time.
- Encourage your child to help out with household chores.



Our children succeed when parents and schools work hand in hand.



Ministry of Education  
SINGAPORE



